



## Installation Instructions for AirGizmos AvMap EKP-IV Panel Dock®

Revision 2, March 30, 2018

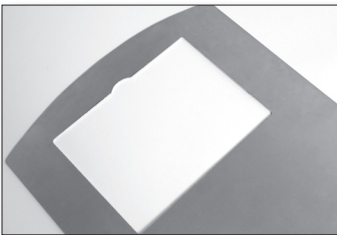


Thank you for purchasing an AirGizmos Panel Dock. This mount was designed to securely hold your portable electronic device. It allows you to quickly remove your portable device from your plane for upgrades, flight planning, or for use in your car or boat. We also feel that this is a safer way to use your portable equipment, as it is securely held in the panel at all times. We hope you receive years of enjoyment from our product. Before beginning the installation process, please take a moment to fill out the registration card.

The Panel Dock has been shipped with a set of mounting hardware necessary for attaching it to an avionics stack. If you intend to install it in a different way, use the included hardware as a reference when deciding what type of installation hardware you will need. The hardware included is as follows: 4 AN365-832A ELASTIC LOCK NUTS, 4 AN525-832R8 SCREWS WITH INTEGRAL WASHERS, and 4 AN960-8 FLAT WASHERS.

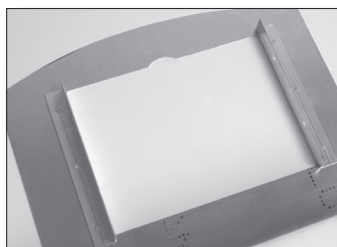
A word of caution: we have designed the mount to be installed using standard screws, and we have fabricated the flanges to allow clearance of the screw heads. Please do not attempt to use countersunk screws. Counter-sinking plastic is generally not a good idea, and we cannot guarantee that our product will perform its duty if you choose to countersink the holes. So, use the included hardware, or something similar, and everything will be fine. Let's get started.

### Step 1: Prepare a hole in your panel



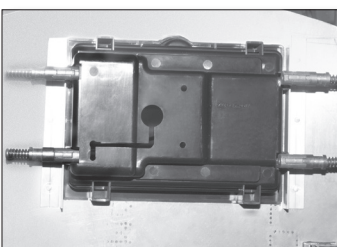
The dimensions of the Panel Dock are included for reference, but measure yours just to be safe. Paper can expand or contract with the weather.

### Step 2: Attach your mounting rails



These instructions assume that you are installing the Panel Dock in a standard metal aviation panel, but that is not the only way to install it. The only requirement for installation is that you must attach the side flanges to two pieces of angle, spaced the correct distance apart. Two pieces of 3/4" 6061 aluminum angle works just great. Position your rails as desired, making sure they are the proper distance apart, and parallel to each-other.

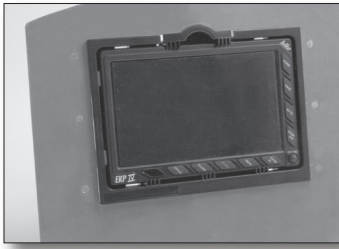
### Step 3: Clip the Panel Dock in place



Using at least two Cleco® edge clamps, clip the Panel Dock to the rails. This will allow you to determine how it should look from the front before you drill any holes.

The front of the mount should protrude enough to allow the latch mechanism to move freely. If you intend to make the mount sit flush with the panel, you will need to cut additional material from the panel to account for the movement of the latch.

#### Step 4: Verify the look and function of the mount



With the Panel Dock secured with the edge clamps you can insert your portable device and verify that it is at the correct depth and that the latching mechanism works properly.

When satisfied with the layout, remove your device from the mount.

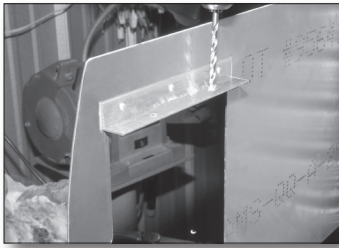
#### Step 5: Mark the holes for drilling



Remove one edge clamp at a time and mark the position of each hole with a pen. Use a circular motion to mark the outer edges of the hole. This will make it easier to determine the exact center.

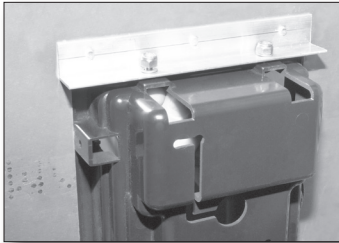
Do this for all four holes, replacing the edge clamps as you go.

#### Step 6: Drill the holes



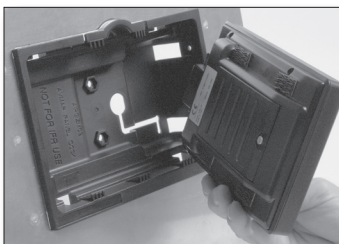
There are a number of ways in which you may choose to drill the holes. You can remove the rails from the panel and drill them on a drill press, or you may use an angle drill to drill them in the plane. Just be careful to make accurate holes at the marks you made, and you will be fine.

#### Step 7: Mount the Panel Dock using the supplied hardware



The bolts we provide have an integral washer on the screw-head side. This provides adequate distribution of force on the plastic to keep it from cracking.

#### Step 8: Install cable



The Panel Dock has been designed to allow the cables that are included with the GPS to be used. We have cut a "keyhole" in the back of the dock to allow the antenna cable to be inserted. These holes have the unique feature of keeping the cables from disappearing behind the panel when the GPS is removed. If desired, you may cover the larger holes using rubber grommets.

Congratulations! Your installation is complete. Please email us with any questions you might have at [info@airgizmos.com](mailto:info@airgizmos.com).

1100 Jupiter Road, Suite 110, Plano, TX 75074 • (972) 671-8001 tel • (972) 231-3870 fax